

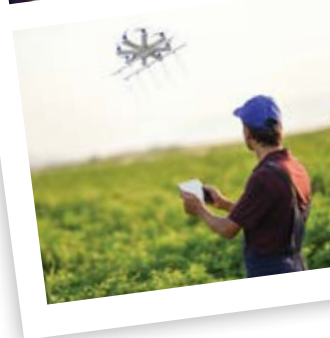
# What's it REALLY Like...

Matching Learning with Jobs  
[wirl.nellen.org.au](http://wirl.nellen.org.au)

## WIRL Workplace Information for Teachers

What's It Really Like (WIRL) has a duty of care to students and business partners alike. WorkSafe has produced a series of videos, checklists, and flyers for use when young people commence work in (or visit) a workplace. Please feel free to share these with the students and their parents.

- 01 **[Aged care: Safety basics](#)** ▶  
Understand and control the risks when working in aged care.
- 02 **[Basic safety checklists for the amenity tree and gardening services industry](#)** ▶  
Work in the amenity tree and gardening services industry involves risks that need to be managed carefully. Severe or fatal injuries are common.
- 03 **[Community support services: Safety basics](#)** ▶  
Understand and control the health and safety risks in community services work.
- 04 **[Disability services: Safety basics](#)** ▶  
Understand and manage the health and safety risks in disability services work.
- 05 **[Farming: Safety basics](#)** ▶  
Make your farm a safe and healthy workplace.
- 06 **[15 minute farm safety check](#)** ▶  
Quickly check the safety of your farm, and prioritise and address identified risks.
- 07 **[Healthcare and hospitals: Safety basics](#)** ▶  
Understand and control the health and safety risks when working in healthcare and hospitals.
- 08 **[Manufacturing: Safety basics](#)** ▶  
Understand the common hazards and risks in manufacturing, and ways to make work safer.
- 09 **[Plant: Safety basics](#)** ▶  
Plant includes machinery, equipment, appliances, implements and tools.
- 10 **[Transport, logistics and warehousing: Safety basics](#)** ▶  
Understand the common hazards and risks, and ways to make work safer.



**Note:** Please refer to digital pdfs for active links.